

JUMO mTRON T Measuring, control, and automation system

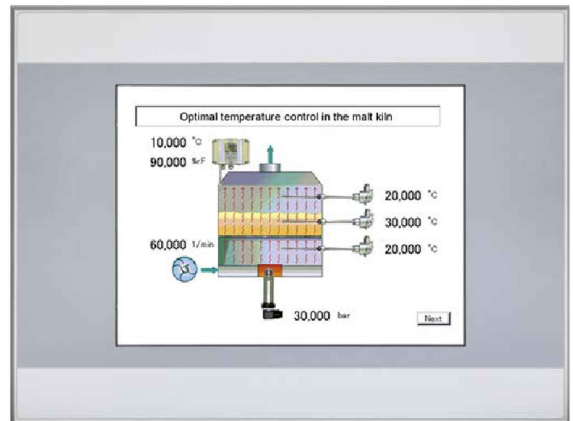
Operating panels

Brief description

The basic version of the JUMO mTRON T automation system includes the multifunction panel 840 (TFT-touchscreen) with a screen size of 21.3 cm (8.4") as standard. Among other features, it offers user administration with access to parameter and configuration data for the whole system as well as predefined screens for service, controller, program generator, and recording functions (including batch reporting). It is also possible to create customized process screens that map the actual plant.

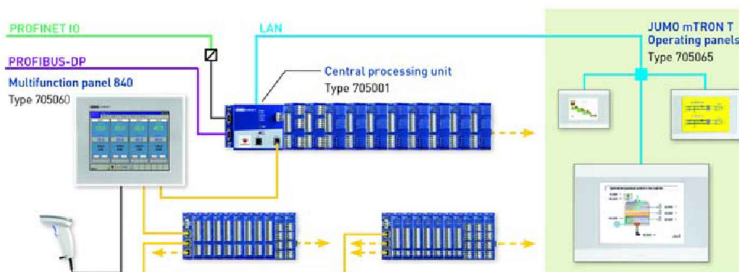
The additional operating panels mean that the automation system can be configured with even greater flexibility. The operating panels come with CODESYS PLC as well as target and web visualization, which is implemented by customized PLC applications. Operation is done within specific process screens. Connecting the panels using CODESYS project design enables direct access to the PLC variables of the JUMO mTRON T via CODESYS data server (PLC option for central processing unit required). This also means that no costs are incurred for a separate external programming software package for each workstation.

The operating panels are supported by the automation system JUMO mTRON T as of system version 02 and as of CODESYS V3.5 SP3 patch 9.



Type 705065/...

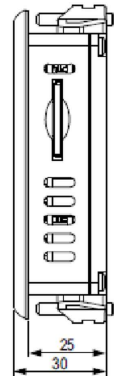
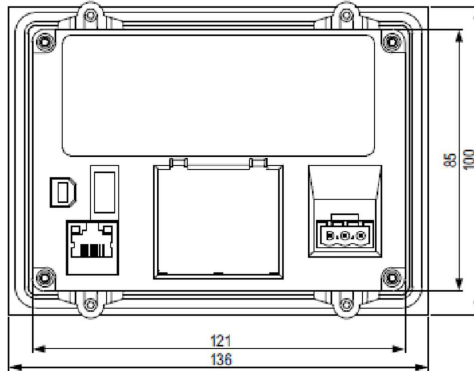
System structure



Features

- TFT color screen (64k colors) with resistive-touch technology
- Screen size (diagonal) 8.9 cm (3.5"), 14.5 cm (5.7") and 26.4 cm (10.4")
- Resolution 320 × 240 pixel and 640 × 480 pixel
- Different case types (plastic, metal)
- Protection type IP65 (on the front)
- Voltage supply DC 24 V
- Ethernet interface (RJ45) for connection to the system
- Up to four operating panels per central processing unit (PLC option required)
- Operation of the system within specific process screens
- Direct access to PLC variables

Operating panel 350 (type 705065/0x-1...)

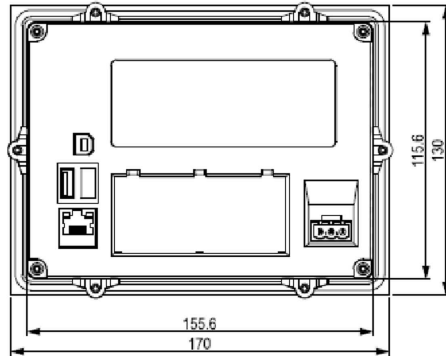


Screen type		TFT color screen
Touch technology		Resistive
Screen size (diagonal)		8.9 cm (3.5")
Resolution		320 × 240 pixel
Number of colors		64k
Contrast	typ.	300:1
Brightness	typ.	250 cd/m ²
Background lighting		LED (dimnable by software)
Voltage supply	nom.	DC 24 V +25/-20 % SELV
Power consumption	max.	5 W
Current inrush		1.5 A ² s
Assembly type		Insertion in panel cut-out
Case type		Plastic
Front panel type		Plastic with neutral design foil (fully enclosed)
Dimensions (W × H × D)		136 mm x 100 mm x 30 mm
Front panel depth		5 mm
Mounting depth		25 mm
Panel cut-out		123 mm x 87 mm (± 1 mm)
Weight		0.3 kg
Protection type		IP65 (front side), IP20 (rear side)
Ambient temperature range		0 to 50 °C
Storage temperature range		-20 to +60 °C
Resistance to climatic conditions		Relative humidity 10 to 95 %, non-condensing

The complete technical data as well as further technical information can be found in the manufacturer's original documents (www.eaton.com; use search function).

Type 705065/0x-1...: search for „XV-102“

Operating panel 570 (type 705065/0x-2...)

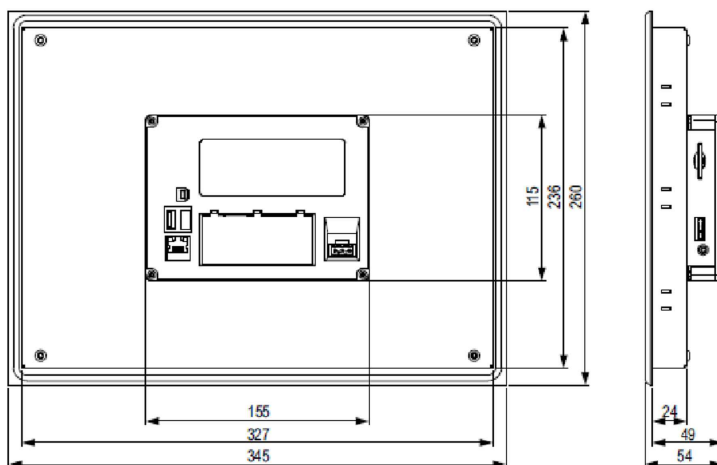


Screen type		TFT color screen
Touch technology		Resistive
Screen size (diagonal)		14.5 cm (5.7")
Resolution		640 × 480 pixels
Number of colors		64k
Contrast	typ.	300:1
Brightness	typ.	250 cd/m ²
Background lighting		LED (dimnable by software)
Voltage supply	nom.	DC 24 V +25/-20 % SELV
Power consumption	max.	10 W
Current inrush		1.5 A ² s
Assembly type		Insertion in panel cut-out
Case type		Plastic
Front panel type		Plastic with neutral design foil (fully enclosed)
Dimensions (W × H × D)		170 mm x 130 mm x 39 mm
Front panel depth		5 mm
Mounting depth		34 mm
Panel cut-out		157 mm x 117 mm (± 1 mm)
Weight		0.6 kg
Protection type		IP65 (front side), IP20 (rear side)
Ambient temperature range		0 to 50 °C
Storage temperature range		-20 to +60 °C
Resistance to climatic conditions		Relative humidity 10 to 95 %, non-condensing

The complete technical data as well as further technical information can be found in the manufacturer's original documents (www.eaton.com; use search function).

Type 705065/0x-2....: search for „XV-102“

Operating panel 1040 (type 705065/0x-5...)



Screen type		TFT color screen
Touch technology		Resistive
Screen size (diagonal)		26.4 cm (10.4")
Resolution		640 × 480 pixels
Number of colors		64k
Contrast	typ.	300:1
Brightness	typ.	250 cd/m ²
Background lighting		LED (dimnable by software)
Voltage supply	nom.	DC 24 V +25/-20 % SELV
Power consumption	max.	12 W
Current inrush		1.5 A ² s
Assembly type		Insertion in panel cut-out
Case type		Metal
Front panel type		Metal with neutral design foil (fully enclosed)
Dimensions (W × H × D)		345 mm x 260 mm x 54 mm
Front panel depth		5 mm
Mounting depth		49 mm
Panel cut-out		329 mm x 238 mm (± 1 mm)
Weight		3.0 kg
Protection type		IP65 (front side), IP20 (rear side)
Ambient temperature range		0 to 50 °C
Storage temperature range		-20 to +60 °C
Resistance to climatic conditions		Relative humidity 10 to 95 %, non-condensing

The complete technical data as well as further technical information can be found in the manufacturer's original documents (www.eaton.com; use search function):

Type 705065/0x-5...: search for „XV-152“

Order details

(1)	Basic type
705065	Operating panel with TFT-touchscreen
(2)	Basic type extension
0	Standard
(3)	Version
8	Standard with factory settings
9	Customer-specific configuration (PLC application)
(4)	Screen size (diagonal)
1	8.9 cm (3.5"), operating panel 350
2	14.5 cm (5.7"), operating panel 570
5	26.4 cm (10.4"), operating panel 1040
(5)	Technology
0	Resistive
(6)	Voltage supply
36	DC 24 V +25/-20 %
(7)	Extra codes
000	No extra code

Other versions upon request.

	(1)	(2)	(3)	(4)	(5)	(6)	(7)					
Order code	<input type="text"/>	/	<input type="text"/>	<input type="text"/>	-	<input type="text"/>	-	<input type="text"/>	-	<input type="text"/>	/	<input type="text"/>
Order example	705065	/	0	8	-	1	-	0	-	36	/	000

Scope of delivery

1 operating panel in the ordered version
Retaining brackets with threaded pin for mounting the device (quantity depends on device type)
1 sealing strip for mounting the device (glued in the device and/or enclosed separately)
1 power supply connector for the device

Accessories

Item	Part no.
SD card without OS, min. 128 MB, for memory expansion	00610471