

JUMO mTRON T

Measuring, Control, and Automation System

Central processing unit

Brief description

The central processing unit is the heart of the system. It contains the process image of the application and manages the configuration and parameter data of the complete system (except for the multifunction panel).

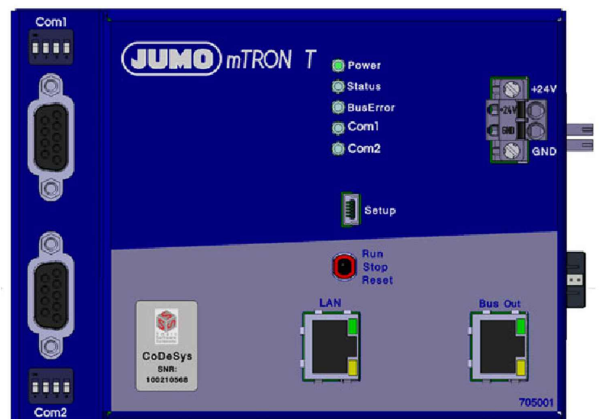
For individual control tasks nine program generators (option) are available and 64 limit values can be monitored.

LEDs are used to indicate applied voltage supply, the operating status of the PLC, system malfunctions, as well as the communication through interfaces.

A USB device interface (setup), a LAN connection (Ethernet), and two system bus connections are available as standard. Up to two interfaces can be optionally equipped for fieldbus applications.

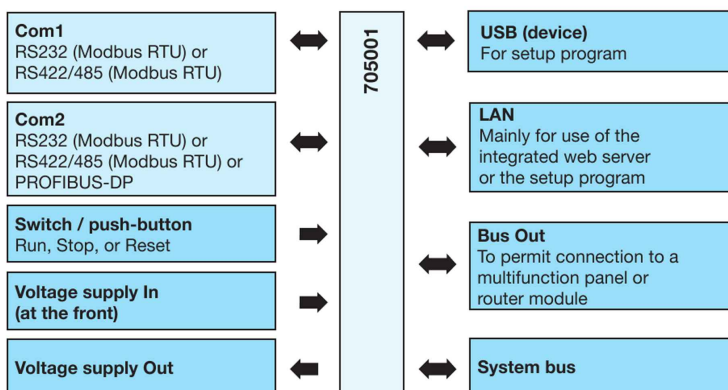
The central processing unit, the input/output modules connected laterally, and modules integrated by a router are comfortably configured and parameterized with the setup program.

A PLC according to IEC 61131-3 can be released as an option. A switch is available to toggle the system operating status (Run, Stop, and Reset).



Type 705001/...

Block diagram



Features

- Process image for up to 30 input/output modules
- Ethernet interface with integrated web server
- One USB interface
- 64 limit values can be monitored
- PLC acc. to IEC 61131-3 (option)
- OPC server (in connection with PLC)
- Nine program generators (option)
- Two field bus interfaces (option)
- Math and logic module (option, activation for all connected controller modules)
- System bus connection on the front (Bus Out)
- Plug and Play when replacing the input/output modules
- Battery buffered RAM
- Real time clock
- Sturdy metal case
- Supply of operating voltage
- Quick wiring of operating voltage and system bus due to easy module connection

Approval/approval marks (see “Technical data”)

Description

Setup program

The setup program is installed on a PC and connected to the base unit (central processing unit) or the multifunction panel via USB or LAN interface. That way the entire system can be comfortably configured, parameterized, and operated.

The setup data is transmitted to the up to 30 connected input/output modules (system bus). General setup data and functions:

- Hardware configuration of the entire system
- Selection and editing of the operating languages
- Configuration and parameterization of the input and output modules
- Configuration of the central processing unit and the multifunction panel
- Configuration and programming of the PLC
- Program editor for 99 programs
- Configuration of the 9 program generators
- Configuration of the recording and the batch reporting
- Editor for customer-specific process images

Limit value monitoring

With the limit value monitoring one input variable can be monitored compared to a fixed limit value or a different variable. 64 limit values can be monitored in this way and for each limit value monitoring eight different alarm functions are available. The configuration is carried out in the setup program or with the multifunction panel.

Even extensive functions can be realized due to additional parameters such as position and value of the switching differential, switch ON/OFF delay, pulse function, acknowledgement type, and startup alarm suppression. The startup alarm suppression can, for example, be used to prevent the limit value monitoring function to be tripped during the process start-up phase.

Event list

The event list contains all events that occurred in the system including date and time. This includes system messages (configuration changes of a module, mains OFF/ON of the central processing unit), general events (sending an e-mail), malfunctions (module errors, communication malfunction), alarms, and collective alarms.

The list contains the last 150 events and can be invoked as text in the set language via web server and on the multifunction panel. In the event of a mains failure, the event list remains saved.

Event texts

The setup program can be used to define up to 250 event texts, each with a length of up to 31 characters. This way, customized event messages can be created.

Interfaces

The following interfaces are available:

- USB device to connect a PC (e.g. for the setup program)
- LAN (Ethernet) (HTTP or Modbus/TCP as master/slave)
- Serial RS232 (Modbus RTU as master/slave)
- Serial RS422/485 (Modbus RTU as master/slave)
- PROFIBUS-DP as slave (as of system version 02)
- Bus Out (at the front) to connect a router module or multifunction panel via network cable

External signals

External input signals (variables) can be transmitted to the system via the fieldbus interfaces and the LAN interface (Modbus/TCP) in addition to the internal input signals. As a result, up to 64 analog variables, up to 64 integer variables, and up to 64 digital variables as well as up to 9 text variables are available.

Web server

The central processing unit serves as web server and thereby offers the option to comfortably access the system via LAN using a PC (web browser). This access method provides the following information:

- Process values
- Event list

Access can be protected by a password.

Alarm transmission by e-mail

Alerts can be sent by e-mail to three addresses simultaneously via a mail server. Up to five alarm texts can be configured; sending is controlled via binary signals.

If special e-mail addresses that forward to mobile phones (text messaging) or fax machines are provided in the company network, alerts can also be transmitted using these communication channels.

Program generator

Nine independent program generators are available as an option so that nine programs can run asynchronously and independently from each other. A total of 99 programs can be managed in a program pool.

The program editor, which is part of the setup program and the multifunction panel, can be used to create a program.

Each program can consist of up to three program channels with four setpoint values and 16 control contacts. Up to 99 program sections are possible. A tolerance band monitoring can be set for the first set point value of each program channel.

A program can be started, stopped, and aborted by an action on the multifunction panel, a binary signal, or via the PLC. Toggling between the program sections is possible as well. A program can also be started by setting default dates and times. The individual pro-

gram channels of a program are synchronously started.

The program is completed when all program channels of the program are completed. If a program channel is prematurely completed, its setpoint values and control contacts are set to a defined value (basic status).

For manual mode, separate setpoint values and control contacts can be defined per program channel (basic status). The setpoint values can be adjusted through the multifunction panel.

The behavior after a mains interruption can be configured (e.g. program abort, continued run, or continuation/abort via multifunction panel).

PLC function

The PLC function (option) is a fully adequate PLC which can be used to read all inputs and to write to all outputs of the modules in the system. A library with predefined function modules and data types including their documentation is available to the user.

For programming a control application, all editors defined in the IEC 61131-3 standard are provided:

- Structured text (ST)
- Sequential function chart (SFC)
- Continuous function chart (CFC)
- Function block diagram (FBD)
- Ladder diagram (LD)
- Instruction list (IL)

Furthermore, a large number of functions are implemented which can be used to quickly and efficiently debug, test, and start up the application.

In addition, the user has the following functions and possibilities when using the PLC:

- Generation of events saved in the event list of the central processing unit
- Configuration of all system modules
- Process mask control of the multifunction panel

The PLC programming system is started from the setup program. Information about the system hardware (modules) is automatically loaded into the PLC programming system. The user can assign machine specific names to process data so that working with the PLC is more comfortable.

A fully adequate OPC server is available in connection with the PLC function. This simplifies the exchange of data with other systems such as SCADA systems or other control systems.

Technical data

Interfaces

USB device Connector designation Connector type Number Application Max. current	Setup Mini-B 1 Connection to a PC (setup program) 100 mA
System bus Out Connector designation Connector type Number Application Connection cable Cable length	Bus Out RJ45 1 Connection of a router module or a multifunction panel Network cable (patch or crossover cable), at least CAT5 (S/FTP) Up to 100 m
Ethernet Connector designation Connector type Number Application Protocol Transfer rate	LAN RJ45 1 Communication with PC (setup program, web server), e-mail server, and Modbus master/slave TCP/IP, HTTP, DHCP, SMTP+POP3, Modbus/TCP 10 Mbit/s, 100 Mbit/s
RS232 or RS422/485 (serial interfaces) Connector designation Connector type Number Application Protocol Transfer rate	Depending on the device type Com1 and Com2 D-Sub 2 Fieldbus applications, communication via modem with a PC (setup program) or with an e-mail server Modbus RTU (master or slave); PROFIBUS-DP (slave, Com2 only) Modbus: 9600 Bd, 19200 Bd, 38400 Bd; PROFIBUS: max. 12 Mbit/s

Electrical data

Voltage supply Connection Voltage Residual ripple	At the front (removable 2-pole terminal strip with Push-In technology) DC 24 V +25/-20 % SELV 5 %
Current consumption	Max. 350 mA (at DC 19.2 V) Current consumption of lined-up modules also has to be considered (see „Hardware configuration“ in the setup program)!
Power consumption	Max. 7 W
Conductor cross section (voltage supply) Wire or strand without ferrule Strand with ferrule 2 x strand with twin ferrule with plastic collar	Min. 1.5 mm ² , max. 2.5 mm ² Min. 1.5 mm ² , max. 2.5 mm ² 1.5 mm ²
Stripping length	10 mm
Electrical safety	Acc. to EN 61010-1 Overvoltage category III, pollution degree 2

Electromagnetic compatibility	Acc. to EN 61326-1
Interference emission	Class A – only for industrial use –
Interference immunity	To industrial requirements
Data backup	Buffered RAM
Buffer battery service life	Approx. 10 years (Lithium battery)

Case and ambient conditions

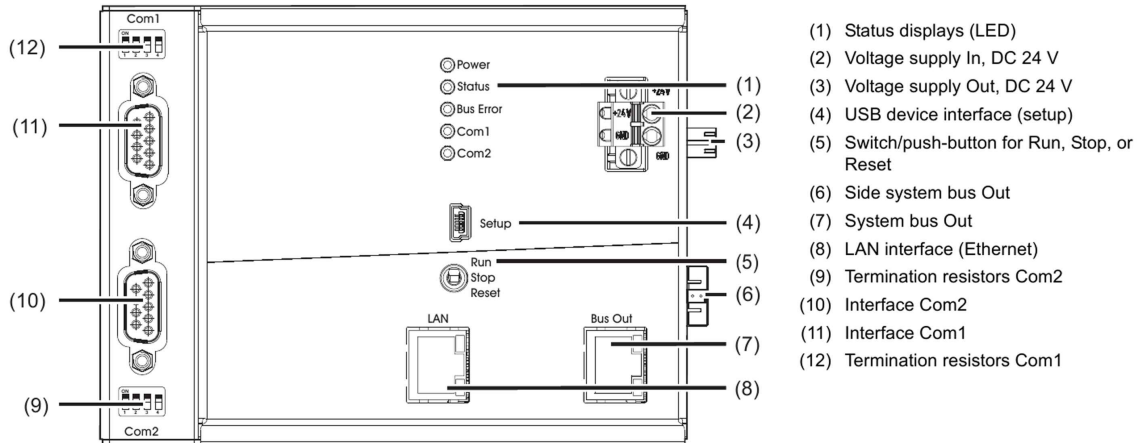
Case type	Metal case for DIN rail mounting in the control cabinet (indoor use); DIN rail acc. to DIN EN 60715, 35 mm x 7.5 mm x 1 mm
Dimensions (W x H x D)	135 mm x 101 mm x 67.1 mm (without connection elements)
Weight (fully equipped)	Approx. 670 g
Protection type	IP20, acc. to DIN EN 60529
Ambient temperature range	-20 to +55 °C
Storage temperature range	-40 to +70 °C
Resistance to climatic conditions	Relative humidity ≤ 90 % annual average without condensation (climatic class 3K3 acc. to DIN EN 60721-3-3 with extended temperature and humidity range)
Site altitude	Up to 2000 m above sea level
Mechanical ambient conditions ^a	Classification acc. to DIN EN 60721-3-3, table 6, class 3M2

^a Test conditions are listed in the System Description B 705000.8.

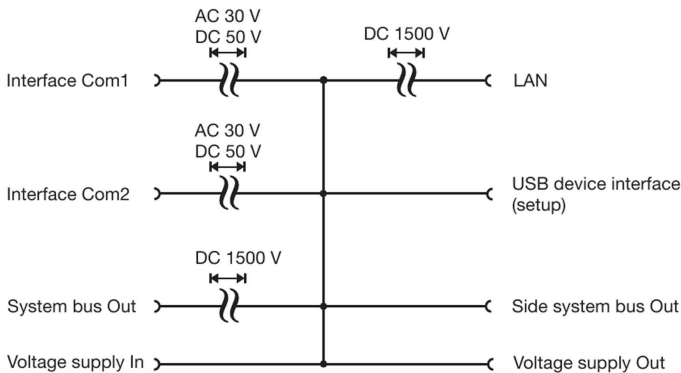
Approval/approval marks

Approval mark	Testing agency	Certificate/certification number	Inspection basis	Valid for
c UL us	Underwriters Laboratories	E201387	UL 61010-1 (3. Ed.), CAN/CSA-22.2 No. 61010-1 (3. Ed.)	all types

Display, operating, and connection elements

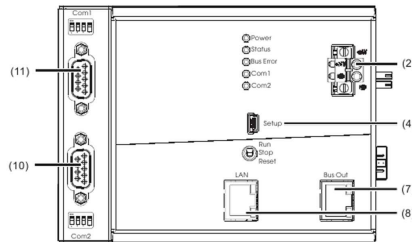


Electrical isolation



Connection diagram

The connection diagram included in the data sheet provides initial information about the connection options. Only use the installation instructions or the operating manual for the electrical connection. The know-how and the correct technical implementation of the safety warnings/instructions contained in these documents are the prerequisite for the installation, electrical connection, and initial start as well as for the safety during operation.



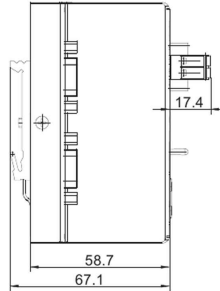
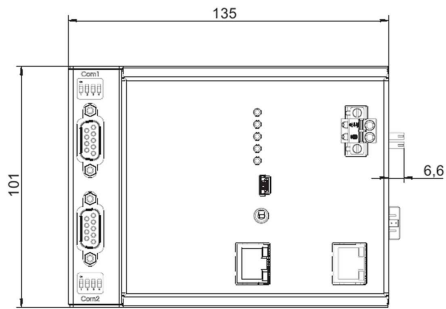
Interfaces

Connection	Designation	Number	Connection element		
USB device	Setup	(4)			
System bus Out	Bus Out	(7)		1 TX+	Transmit data +
				2 TX-	Transmit data -
				3 RX+	Receive data +
				6 RX-	Receive data -
Ethernet	LAN	(8)		1 TX+	Transmit data +
				2 TX-	Transmit data -
				3 RX+	Receive data +
				6 RX-	Receive data -
Serial interface (RS232), option	Com1, Com2	(11), (10)		2 RxD	Receive data
				3 TxD	Transmit data
				5 GND	Ground
Serial interface (RS422), option	Com1, Com2	(11), (10)		3 TxD+	Transmit data +
				4 RxD+	Receive data +
			5 GND	Ground	
			8 TxD-	Transmit data -	
			9 RxD-	Receive data -	
Serial interface (RS485), option	Com1, Com2	(11), (10)	3 TxD+/RxD+	Transmit/Receive data +	
			5 GND	Ground	
			8 TxD-/RxD-	Transmit/Receive data -	
PROFIBUS-DP, option (as of system version 02)	Com2	(10)	8 RxD/TxD-N (A)	Transmit/Receive data -	
			3 RxD/TxD-P (B)	Transmit/Receive data +	
			6 VP (+5 V)	Voltage supply +	
			5 DGND	Data ground	

Voltage supply

Connection	Designation	Number	Symbol and terminal designation
Voltage supply In	+24 V and GND	(2)	+24 V U_x GND

Dimensions



Module overview

Base units

- Central processing unit
Data sheet 705001

Input/output modules

- Multichannel controller module
Data sheet 705010
- Relay module 4-channel
Data sheet 705015
- Analog input module 4-channel
Data sheet 705020
- Analog input module 8-channel
Data sheet 705021
- Digital input/output module 12-channel
Data sheet 705030

Special modules

- Router module
Data sheet 705040

Operating, visualization, recording

- Multifunction panel 840
Data sheet 705060

Power supply units

- 705090/05-33
Data sheet 705090
- 705090/10-33
Data sheet 705090

Order details

(1) Basic type	
705001	Central processing unit (1x Ethernet (RJ45), 1x system bus (RJ45), 1x system bus (E-Bus), monitoring of 64 limit values)
(2) Basic type extension	
0	Standard
(3) Version	
8	With factory settings
(4) Interface Com1	
00	Not used
51	RS232 Modbus RTU
54	RS422/485 Modbus RTU
(5) Interface Com2	
00	Not used
51	RS232 Modbus RTU
54	RS422/485 Modbus RTU
64	PROFIBUS-DP (as of system version 02)
(6) Voltage supply	
36	DC 24 V +25/-20 %
(7) Extra codes	
000	Without extra code
214	Math/logic function (activation for all connected controller modules)
224	PLC acc. to IEC 61131-3 (CODESYS V3)
225	Program generator 1 to 9
228	Program generator 1 to 9 with process steps (as of system version 02)

Order code (1) (2) (3) (4) (5) (6) (7)
 / - - - / , ...^a
Order example 705001 / 0 8 - 00 - 00 - 36 / 214

^a List extra codes in sequence, separated by a comma.

Delivery package

1 central processing unit in the ordered version
1 cover for system bus
2 screw-on end clamps for DIN rail
1 Installation Instructions B 705001.4
1 MiniDVD with setup program (demo version), programming software CODESYS V3 and detailed documentation

Accessories

Article	Part no.
Interface modules (expansion boards):	
RS232 Modbus RTU	00569505
RS422/485 Modbus RTU	00569506
PROFIBUS-DP (as of system version 02)	00569507
Extra codes (activations):	
Math/logic module (activation for all connected controller modules)	00569509
PLC according to IEC 61131-3 (CODESYS V3)	00569510
Program generator 1 to 9	00569511
Program generator 1 to 9 with process steps (as of system version 02)	00606498

General accessories

Article	Part no.
JUMO mTRON T system manual, English	00575577
MiniDVD with setup program (full version), programming software CODESYS V3, and detailed documentation; incl. USB cable	00569494
PC Evaluation Software PCA3000	00431882
Release automatic print for PC Evaluation Software PCA3000	00505548
PCA Communication Software PCC	00431879
Plant Visualization Software JUMO SVS3000: See data sheet 700755	-
USB cable A-plug mini-B-plug 3 m	00506265