

日本富士端子FUJI Terminal 连接器端子 圆形端子 无绝缘圆形端子 (FUJI Terminal Ring Terminals Non-Insulated ring terminals)

采购热线：021-62041958,021-62041956

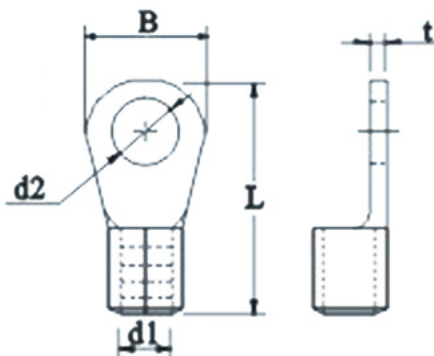


微信扫一扫左侧二维码，
手机/平板浏览本产品信息

功能特点

产品介绍：
材质：紫铜
镀层：锡

规格尺寸



技术参数

ITEM NO 品名	DIMENSIONS 尺寸 inch(mm)					STANDARD PACKING 包装方式 (PIECE)		STUD SIZE	WIRE RANGE 电线范围 A.W.G. mm ²
	d1	d2	B	L	t	BOX 盒子	CARTON 纸箱		
R0.5-2B		0.087(2.2)	0.205(5.2)	0.488(12.4)		10,000	60,000	#2	
R0.5-2B		0.126(3.2)	0.205(5.2)	0.488(12.4)		10,000	60,000	#4	

R0.5-3B	0.043 (1.1)	0.126(3.2)			0.020 (0.5)	10,000	60,000	#4	22-20 A.W.G. 0.2-0.5 mm ²
R0.5-3.5B		0.146(3.7)	0.260(6.6)	0.591(15.0)		10,000	60,000	#6	
R0.5-4B		0.169(4.3)				10,000	60,000	#8	
R0.5-5B		0.209(5.3)	0.315(8.0)				10,000	60,000	
R1.25-3B	0.074 (1.9)	0.126(3.2)	0.217(5.5)	0.453(11.5)	0.029 (0.7)	2,000	30,000	#4	22-16 A.W.G. 0.5-1.5 mm ²
R1.25-3.5B		0.146(3.7)	0.217(5.5)	0.453(11.5)		2,000	30,000	#6	
R1.25-3.5LB		0.146(3.7)	0.260(6.6)	0.567(14.4)		2,000	30,000	#6	
R1.25-4B		0.169(4.3)	0.315(8.0)	0.622(15.8)		2,000	30,000	#8	
R1.25-4MB		0.169(4.3)	0.260(6.6)	0.567(14.4)		2,000	30,000	#8	
R1.25-5B		0.209(5.3)	0.315(8.0)	0.622(15.8)		2,000	30,000	#10	
R1.25-6B		0.252(6.4)	0.457(11.6)	0.846(21.5)		1,000	10,000	1/4	
R1.25-8B		0.331(8.4)	0.457(11.6)	0.846(21.5)		1,000	10,000	5/16	
R1.25-10B		0.413(10.5)	0.539(13.7)	1.004(25.5)		1,000	10,000	3/8	
R1.25-12B		0.512(13.0)	0.748(19.0)	1.130(28.7)		1,000	10,000	1/2	
R2-3MB	0.098 (2.5)	0.126(3.2)	0.260(6.6)	0.567(14.4)	0.031 (0.8)	1,000	15,000	#4	16-14 A.W.G. 1.5-2.5 mm ²
R2-3B		0.126(3.2)	0.335(8.5)	0.661(16.8)		1,000	15,000	#4	
R2-3.5B		0.146(3.7)	0.260(6.6)	0.567(14.4)		1,000	15,000	#6	
R2-3.5LB		0.146(3.7)	0.335(8.5)	0.661(16.8)		1,000	15,000	#6	
R2-4B		0.169(4.3)	0.335(8.5)	0.661(16.8)		1,000	15,000	#8	
R2-4MB		0.169(4.3)	0.260(6.6)	0.567(14.4)		1,000	15,000	#8	
R2-5MB		0.209(5.3)	0.335(8.5)	0.661(16.8)		1,000	15,000	#10	
R2-5B		0.209(5.3)	0.374(9.5)	0.657(16.7)		1,000	15,000	#10	
R2-6B		0.252(6.4)	0.472(12.0)	0.835(21.2)		1,000	10,000	1/4	
R2-8B		0.331(8.4)	0.472(12.0)	0.835(21.2)		1,000	10,000	5/16	
R2-10B		0.413(10.5)	0.539(13.7)	1.004(25.5)		1,000	10,000	3/8	
R2-12B		0.512(13.0)	0.748(19.0)	1.130(28.7)		1,000	10,000	1/2	
R3.5-4B	0.133 (3.4)	0.169(4.3)	0.374(9.5)	0.768(19.5)	0.031 (0.8)	500	7500	#8	14-12 A.W.G. 2.5-4 mm ²
R3.5-4MB		0.169(4.3)	0.311(7.9)	0.744(18.9)		500	7500	#8	
R3.5-5B		0.209(5.3)	0.374(9.5)	0.768(19.5)		500	7500	#10	
R3.5-5MB		0.209(5.3)	0.311(7.9)	0.744(18.9)		500	7500	#10	
R3.5-6B		0.256(6.5)	0.469(11.9)	0.846(21.5)		500	7500	1/4	
R5.5-3B	0.141 (3.6)	0.126(3.2)	0.374(9.5)	0.768(19.5)	0.039 (1.0)	500	7500	#4	12-10 A.W.G. 4-6 mm ²
R5.5-3.5B		0.146(3.7)	0.374(9.5)	0.768(19.5)		500	7500	#6	
R5.5-4SB		0.169(4.3)	0.291(7.4)	0.728(18.5)		500	7500	#8	
R5.5-4B		0.169(4.3)	0.374(9.5)	0.768(19.5)		500	7500	#8	
R5.5-5B	0.141 (3.6)	0.209(5.3)	0.374(9.5)	0.768(19.5)	0.039 (1.0)	500	7500	#10	12-10 A.W.G. 4-6 mm ²
R5.5-5SB		0.209(5.3)	0.291(7.4)	0.728(18.5)		500	7500	#10	
R5.5-6B		0.252(6.4)	0.472(12.0)	1.004(25.5)		500	5,000	1/4	
R5.5-8B		0.331(8.4)	0.591(15.0)	1.091(27.7)		500	5,000	5/16	
R5.5-10B		0.413(10.5)	0.591(15.0)	1.091(27.7)		500	5,000	3/8	
R5.5-12B	0.512(13.0)	0.756(19.2)	1.276(32.4)	0.039 (1.0)	500	5,000	1/2		
R8-4B	0.193 (4.9)	0.173(4.40)	0.437(11.1)	0.888(22.55)	0.039 (1.0)	1,000	6,000	#8	
R8-4B(t=1.2)	0.177 (4.5)		0.472(12.0)	0.937(23.8)	0.047 (1.2)	1,000	6,000	#8	
R8-4SB	0.193 (4.9)	0.173(4.4)	0.350(8.9)	0.846(21.5)	0.039 (1.0)	1,000	6,000	#8	
R8-4SB(t=1.2)	0.177 (4.5)		0.374(9.5)	0.888(22.55)	0.047 (1.2)	1,000	6,000	#8	
R8-5B	0.193 (4.9)	0.205(5.2)	0.437(11.1)	0.886(22.5)	0.039 (1.0)	1,000	6,000	#10	
R8-5B(t=1.2)	0.177 (4.5)	0.213(5.4)	0.472(12.0)	0.937(23.8)	0.047 (1.2)	1,000	6,000	#10	
R8-5SB	0.193 (4.9)	0.205(5.2)	0.350(8.9)	0.846(21.5)	0.039 (1.0)	1,000	6,000	#10	
R8-5SB(t=1.2)	0.177 (4.5)		0.374(9.5)	0.888(22.55)	0.047 (1.2)	1,000	6,000	#10	
R8-5LB(t=1.2)	0.177 (4.5)		0.591(15.0)	1.165(29.6)	0.047 (1.2)	1,000	6,000	#10	
R8-6B	0.193 (4.9)	0.252(6.4)	0.437(11.1)	0.886(22.5)	0.039 (1.0)	1,000	6,000	1/4	

R8-6B(t=1.2)	0.193 (4.5)	0.260(6.6)	0.472(12.0)	0.937(23.8)	0.039 (1.2)	1,000	6,000	1/4	8 A.W.G. 8 mm ²	
R8-6SB	0.193 (4.9)	0.252(6.4)	0.350(8.9)	0.846(21.5)	0.039 (1.0)	1,000	6,000	1/4		
R8-6SB(t=1.2)	0.177 (4.5)	0.260(6.6)	0.374(9.5)	0.888(22.55)	0.047 (1.2)	1,000	6,000	1/4		
R8-6LB(t=1.2)	0.177 (4.5)		0.591(15.0)	1.165(29.6)	0.047 (1.2)	1,000	6,000	1/4		
R8-8B	0.189 (4.8)	0.339(8.6)	0.551(14.0)	1.063(27.0)	0.039 (1.0)	1,000	6,000	5/16		
R8-8B(t=1.2)	0.177 (4.5)		0.591(15.0)	1.165(29.6)	0.047 (1.2)	1,000	6,000	5/16		
R8-10B	0.189 (4.8)	0.413(10.5)	0.551(14.0)	1.063(27.0)	0.039 (1.0)	1,000	6,000	3/8		
R8-10B(t=1.2)	0.177 (4.5)	0.421(10.7)	0.591(15.0)	1.165(29.6)	0.047 (1.2)	1,000	6,000	3/8		
R8-12B(t=1.2)		0.520(13.2)	0.787(20.0)	1.319(33.5)		1,000	6,000	1/2		
R8-14B(t=1.2)		0.598(15.2)	1.260(32.0)	1.969(50.0)		1,000	6,000	9/16		
R8-16B(t=1.2)		0.677(17.2)				1,000	6,000	5/8		
R8-18B(t=1.2)		0.756(19.2)				1,000	6,000	11/16		
R8-20B(t=1.2)		0.835(21.2)				1,000	6,000	3/4		
R14-5B		0.228 (5.8)	0.213(5.4)	0.472(12.0)		1.161(29.5)	0.043 (1.1)	1,000	6,000	#10
R14-5SB				0.394(10.0)		1.122(28.5)	0.059 (1.5)	1,000	6,000	#10
R14-5SB(t=1.5)	0.213(5.4)		0.394(10.0)	1.122(28.5)	0.043 (1.1)	1,000	6,000	#10		
R14-6B	0.256(6.5)		0.472(12.0)	1.161(29.5)	0.043 (1.1)	1,000	6,000	1/4		
R14-6B(t=1.5)	0.260(6.6)				0.059 (1.5)	1,000	6,000	1/4		
R14-6SB	0.228 (5.8)		0.260(6.6)	0.394(10.0)	1.122(28.5)	0.043 (1.1)	1,000	6,000	1/4	
R14-6SB(t=1.5)		0.059 (1.5)				1,000	6,000	1/4		
R14-8B		0.335(8.5)	0.630(16.0)	1.291(32.8)	0.043 (1.1)	1,000	6,000	5/16		
R14-8B(t=1.5)					0.059 (1.5)	1,000	6,000	5/16		
R14-8SB		0.339(8.6)	0.472(12.0)	1.161(29.5)	0.043 (1.1)	1,000	6,000	5/16		
R14-8SB(t=1.5)					0.059 (1.5)	1,000	6,000	5/16		
R14-10B		0.417(10.6)	0.630(16.0)	1.291(32.8)	0.043 (1.1)	1,000	6,000	3/8		
R14-10B(t=1.5)					0.421(10.7)	0.059 (1.5)	1,000	6,000	3/8	
R14-12B		0.516(13.1)	0.866(22.0)	1.547(39.3)	0.043 (1.1)	1,000	6,000	1/2		
R14-12B(t=1.5)					0.520(13.2)	0.059 (1.5)	1,000	6,000	1/2	
R14-14B(t=1.5)		0.598(15.2)	1.181(30.0)	1.929(49.0)	0.059 (1.5)	1,000	6,000	9/16		
R14-16B(t=1.5)		0.677(17.2)				1,000	6,000	5/8		
R14-18B(t=1.5)		0.756(19.2)				1,000	6,000	11/16		
R14-20B(t=1.5)		0.835(21.2)				1,000	6,000	3/4		
R22-5B	0.311 (7.9)	0.217(5.5)	0.472(12.0)	1.220(31.0)	0.047 (1.2)	600	3,600	#10		
R22-5B(t=1.8)	0.303 (7.7)	0.213(5.4)		1.217(30.9)	0.071 (1.8)	600	3,600	#10		
R22-6B	0.311 (7.9)	0.260(6.6)	0.650(16.5)	1.307(33.2)	0.047 (1.2)	600	3,600	1/4		
R22-6B(t=1.8)	0.303 (7.7)			1.305(33.15)	0.071 (1.8)	600	3,600	1/4		
R22-6SB	0.311 (7.9)		0.472(12.0)	1.217(30.9)	0.047 (1.2)	600	3,600	1/4		
R22-6SB(t=1.8)	0.303 (7.7)				0.071 (1.8)	600	3,600	1/4		
R22-8B	0.311 (7.9)	0.335(8.5)	0.650(16.5)	1.307(33.2)	0.047 (1.2)	600	3,600	5/16		
R22-8B(t=1.8)	0.303 (7.7)			1.305(33.15)	0.071 (1.8)	600	3,600	5/16		
R22-8SB	0.311 (7.9)	0.339(8.6)	0.472(12.0)	1.217(30.9)	0.047 (1.2)	600	3,600	5/16		
R22-8SB(t=1.8)	0.303 (7.7)				0.071 (1.8)	600	3,600	5/16		
R22-10B	0.311 (7.9)	0.421(10.7)	0.689(17.5)	1.417(36.0)	0.047 (1.2)	600	3,600	3/8		
R22-10B(t=1.8)	0.303 (7.7)			1.415(35.95)	0.071 (1.8)	600	3,600	3/8		
R22-12B	0.311 (7.9)	0.512(13.0)		1.417(36.0)	0.047 (1.2)	600	3,600	1/2		
R22-12B(t=1.8)	0.303 (7.7)	0.520(13.2)	0.866(22.0)	1.673(42.5)	0.071 (1.8)	600	3,600	1/2		
R22-14B(t=1.8)		0.598(15.2)	1.181(30.0)	2.028(51.5)		300	1,800	9/16		
R22-16B(t=1.8)		0.677(17.2)				300	1,800	5/8		
R22-18B(t=1.8)		0.756(19.2)				300	1,800	11/16		
R22-20B(t=1.8)		0.835(21.2)				300	1,800	3/4		
R38-5B			0.866(22.0)	1.673(42.5)	0.055 (1.4)	200	1,200	#10		

R38-5B(t=1.8)	0.370 (9.4)	0.213(5.4)		1.654(42.0)	0.071 (1.8)	200	1,200	#10	2 A.W.G. 38 mm ²		
R38-5SB				0.602(15.3)	1.535(39.0)	0.055 (1.4)	200	1,200		#10	
R38-5SB(t=1.8)				0.610(15.5)	1.447(36.75)	0.071 (1.8)	200	1,200		#10	
R38-6B		0.252(6.4)	0.866(22.0)	1.673(42.5)	0.055 (1.4)	200	1,200	1/4			
R38-6SB	0.370 (9.4)	0.252(6.4)		0.602(15.3)	1.535(39.0)	0.055 (1.4)	200	1,200	1/4	2 A.W.G. 38 mm ²	
R38-6B(t=1.8)				0.866(22.0)	1.654(42.0)	0.071 (1.8)	200	1,200	1/4		
R38-6SB(t=1.8)		0.260(6.6)	0.610(15.5)	1.447(36.7)	0.071 (1.8)	200	1,200	1/4			
R38-8B		0.331(8.4)		0.866(22.0)	1.673(42.5)	0.055 (1.4)	200	1,200	5/16		
R38-8SB				0.602(15.3)	1.535(39.0)	0.055 (1.4)	200	1,200	5/16		
R38-8B(t=1.8)				0.866(22.0)	1.654(42.0)	0.071 (1.8)	200	1,200	5/16		
R38-8SB(t=1.8)				0.602(15.3)	1.536(39.0)	0.071 (1.8)	200	1,200	5/16		
R38-10B		0.417(10.6)		0.866(22.0)	1.673(42.5)	0.055 (1.4)	200	1,200	3/8		
R38-10SB				0.602(15.3)	1.535(39.0)	0.055 (1.4)	200	1,200	3/8		
R38-10B(t=1.8)		0.417(10.6)		0.866(22.0)	1.654(42.0)	0.071 (1.8)	200	1,200	3/8		
R38-10SB(t=1.8)				0.610(15.5)	1.447(36.7)	0.071 (1.8)	200	1,200	3/8		
R38-12B		0.520(13.2)		0.866(22.0)	1.673(42.5)	0.055 (1.4)	200	1,200	1/2		
R38-12B(t=1.8)					1.654(42.0)	0.055 (1.4)	200	1,200	1/2		
R38-14B(t=1.8)		0.598(15.2)	1.181(30.0)	2.047(52.0)	0.071 (1.8)	100	600	9/16			
R38-16B(t=1.8)		0.677(17.2)				100	600	5/8			
R38-18B(t=1.8)		0.756(19.2)				100	600	11/16			
R38-20B(t=1.8)	0.835(21.2)	100				600	3/4				
R60-S6B	0.449 (11.4)	0.260(6.6)	0.748(19.0)	1.870(47.5)	0.075 (1.9)	100	600	1/4	1/0 A.W.G. 60 mm ²		
R60-S8B		0.339(8.6)				0.866(22.0)	1.929(49.0)	100		600	5/16
R60-S10B		0.421(10.7)						100		600	3/8
R60-6B		0.260(6.6)	0.866(22.0)	1.929(49.0)		100	600	1/4			
R60-8B		0.339(8.6)				100	600	5/16			
R60-10B		0.421(10.7)				100	600	3/8			
R60-12B		0.520(13.2)				100	600	1/2			
R60-14B		0.598(15.2)				1.260(32.0)	2.264(57.5)	100		600	9/16
R60-16B		0.677(17.2)						100		600	5/8
R60-18B		0.756(19.2)						100		600	11/16
R60-20B		0.835(21.2)						100		600	3/4
R60-22B		0.913(23.2)				100	600	7/8			
R70-6B	0.492 (12.5)	0.260(6.6)			0.866(22.0)	1.929(49.0)	0.079 (2.0)	100	600	1/4	2/0 A.W.G. 70 mm ²
R70-8B		0.339(8.6)	100	600				5/16			
R70-10B		0.421(10.7)	100	600				3/8			
R70-12B		0.520(13.2)	100	600				1/2			
R70-14B	0.531 (13.5)	0.598(15.2)	1.063(27.0)	2.106(53.5)	0.079 (2.0)	100	600	9/16			
R70-16B		0.677(17.2)				100	600	5/8			
R80-6B		0.260(6.6)	1.063(27.0)	2.087(53.0)		100	600	1/4			
R80-8B		0.339(8.6)				100	600	5/16			
R80-10B		0.421(10.7)				100	600	3/8			
R80-12B		0.520(13.2)				100	600	1/2			
R80-S14B		0.598(15.2)				100	600	9/16			

R80-L6B	0.571 (14.5)	0.260(6.6)	1.260(32.0)	2.480(63.0)	0.091 (2.3)	100	600	1/4	3/0 A.W.G. 80 mm ²				
R80-L8B		0.339(8.6)				100	600	5/16					
R80-L10B		0.421(10.7)				100	600	3/8					
R80-L12B		0.520(13.2)				100	600	1/2					
R80-14B		0.598(15.2)				100	600	9/16					
R80-16B		0.677(17.2)				100	600	5/8					
R80-18B		0.756(19.2)				100	600	11/16					
R80-20B		0.835(21.2)				100	600	3/4					
R80-22B		0.913(23.2)				100	600	7/8					
R100-6B	0.646 (16.4)	0.260(6.6)	1.122(28.5)	2.185(55.5)	0.102 (2.6)	100	600	1/4	4/0 A.W.G. 100 mm ²				
R100-8B		0.339(8.6)				100	600	5/16					
R100-10B		0.421(10.7)				100	600	3/8					
R100-12B		0.520(13.2)				100	600	1/2					
R100-S14B		0.598(15.2)				100	600	9/16					
R100-L6B		0.260(6.6)				1.260(32.0)	2.717(69.0)	100		600	1/4		
R100-L8B		0.339(8.6)						100		600	5/16		
R100-L10B		0.421(10.7)						100		600	3/8		
R100-L12B		0.520(13.2)						100		600	1/2		
R100-14B	0.598(15.2)	100	600	9/16									
R100-16B	0.677(17.2)	100	600	5/8									
R100-18B	0.756(19.2)	1.260(32.0)	2.717 (69.0)	0.102 (2.6)	100			600	11/16	4/0 A.W.G. 100 mm ²			
R100-20B	0.835(21.2)				100			600	3/4				
R100-22B	0.913(23.2)				100			600	7/8				
R150-6B	0.768 (19.5)	0.260(6.6)	1.417(36.0)	2.638 (67.0)	0.126 (3.2)	100	600	1/4	250/300 A.W.G. 150 mm ²				
R150-8B		0.339(8.6)				100	600	5/16					
R150-10B		0.421(10.7)				100	600	3/8					
R150-12B		0.520(13.2)				100	600	1/2					
R150-S14B		0.598(15.2)				100	600	9/16					
R150-S16B		0.677(17.2)				100	600	5/8					
R150-L6B		0.260(6.6)				2.953 (75.0)	100	600		1/4			
R150-L8B		0.339(8.6)					100	600		5/16			
R150-L10B		0.421(10.7)					100	600		3/8			
R150-L12B		0.520(13.2)		100			600	1/2					
R150-14B		0.598(15.2)		100			600	9/16					
R150-16B		0.677(17.2)		100			600	5/8					
R150-18B		0.756(19.2)		100			600	11/16					
R150-20B		0.835(21.2)		100			600	3/4					
R150-22B		0.913(23.2)		100			600	7/8					
R180-8B		0.866 (22.0)		0.339(8.6)		1.575(40.0)	2.756 (70.0)	0.126 (3.2)		40	240	5/16	300/350 A.W.G. 100 mm ²
R180-10B				0.421(10.7)						40	240	3/8	
R180-12B				0.520(13.2)						40	240	1/2	
R180-14B				0.598(15.2)						40	240	9/16	
R180-S16B	0.677(17.2)		40	240	5/8								
R180-L8B	0.339(8.6)		40	240	5/16								
R180-L10B	0.421(10.7)		40	240	3/8								
R180-L12B	0.520(13.2)		40	240	1/2								

R180-L14B	0.945 (24.0)	0.598(15.2)	1.732(44.0)	3.543 (90.0)	0.157 (4.0)	40	240	9/16	180 mm
R180-16B		0.677(17.2)				40	240	5/8	
R180-18B		0.756(19.2)				40	240	11/16	
R180-20B		0.835(21.2)				40	240	3/4	
R180-22B		0.913(23.2)				40	240	7/8	
R180-24B		0.992(25.2)				40	240	15/16	
R180-27B		1.110(28.2)				40	240	1	
R200-8B	0.945 (24.0)	0.339(8.6)	1.732(44.0)	3.110 (79.0)	0.157 (4.0)	20	120	5/16	400/500 A.W.G. 200 mm ²
R200-10B		0.421(10.7)				20	120	3/8	
R200-12B		0.520(13.2)				20	120	1/2	
R200-14B		0.598(15.2)				20	120	9/16	
R200-S16B		0.677(17.2)				20	120	5/8	
R200-S18B		0.756(19.2)				20	120	11/16	
R200-L8B		0.339(8.6)				20	120	5/16	
R200-L10B		0.421(10.7)		20		120	3/8		
R200-L12B		0.520(13.2)		20		120	1/2		
R200-L14B		0.598(15.2)		20		120	9/16		
R200-16B		0.677(17.2)		20		120	5/8		
R200-18B		0.756(19.2)		20		120	11/16		
R200-20B		0.835(21.2)		20		120	3/4		
R200-22B		0.913(23.2)		20		120	7/8		
R200-24B		0.992(25.2)		20		120	15/16		
R200-27B		1.110(28.2)		20		120	1		
R325-8B		1.102 (28.0)		0.339(8.6)		1.969(50.0)	3.622 (92.0)	0.177 (4.5)	
R325-10B	0.421(10.7)		10	60	3/8				
R325-12B	0.520(13.2)		10	60	1/2				
R325-14B	0.598(15.2)		10	60	9/16				
R325-16B	0.677(17.2)		10	60	5/8				
R325-S18B	0.756(19.2)		10	60	11/16				
R325-S20B	0.835(21.2)		10	60	3/4				
R325-L8B	0.339(8.6)		10	60	5/16				
R325-L10B	0.421(10.7)		10	60	3/8				
R325-L12B	0.520(13.2)		10	60	1/2				
R325-L14B	0.598(15.2)		10	60	9/16				
R325-L16B	0.677(17.2)		10	60	5/8				
R325-18B	0.756(19.2)		10	60	11/16				
R325-20B	0.835(21.2)		10	60	3/4				
R325-22B	0.913(23.2)		10	60	7/8				
R325-24B	0.992(25.2)		10	60	15/16				
R325-27B	1.110(28.2)		10	60	1				